

# Modular Multi-pole SPD

## ProTec C(R) 160 (4+0)

### Class II • Type 2



Location of Use: Sub-distribution Boards  
 Network Systems: TN-S  
 Mode of Protection: L-PE, N-PE  
 Surge Ratings:  $I_n = 20\text{ kA}$  (8/20 $\mu\text{s}$ )  
 $I_{\text{max}} = 40\text{ kA}$  (8/20 $\mu\text{s}$ )  
 IEC/EN Category: Class II / Type 2  
 Protective Elements: High Energy MOV  
 Housing: Modular Design  
 Compliance: IEC 61643-11:2011  
 EN 61643-11:2012

## Technical Data

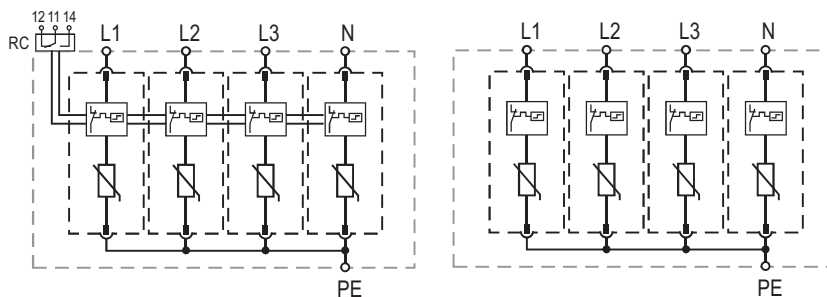
ProTec C(R) 160/xxx (4+0)		150	275	320	385	440
<b>Electrical</b>						
Nominal AC Voltage (50/6Hz)	$U_o$	120V	230V	230V	230V	230V
Maximum Continuous Operating Voltage (AC)	$U_c$	150V	275V	320V	385V	440V
Nominal Discharge Current (8/20 $\mu\text{s}$ )	$I_n$	20kA				
Maximum Discharge Current (8/20 $\mu\text{s}$ )	$I_{\text{max}}$	40kA				
Voltage Protection Level	$U_p$	< 1.0kV	< 1.5kV	< 1.5kV	< 1.9kV	< 2.0kV
Response Time	$t_A$	< 25 ns				
Back-Up Fuse (if mains > 12A)		125 A gG				
Short-Circuit Current Rating (AC)	$I_{\text{SCCR}}$	25kA				
TOV Withstand 5s	$U_T$	174V	335V	335V	438V	438V
Number of Ports		1				
<b>Mechanical &amp; Environmental</b>						
Temperature Range	$T_a$	-40 °C to +85 °C				
Permissible Humidity	RH	5%...95%				
Terminal Screw Torque	$M_{\text{max}}$	3.0Nm				
Conductor Cross Section (max)		35 mm <sup>2</sup> (solid) / 25 mm <sup>2</sup> (stranded)				
Mounting		35 mm DIN Rail, EN 60715				
Degree of Protection		IP 20				
Housing Material		Thermoplastic: Extinguishing Degree UL 94 V-0				
Thermal Protection		Yes				
Fault Indication		Red Flag				
Remote Contacts (RC)		Optional				
RC Switching Capacity		AC: 250V/0.5 A; 125V/3 A				
RC Terminal Cross Section (max)		1.5 mm <sup>2</sup>				
RC Terminal Screw Torque	$M_{\text{max}}$	0.25Nm				
<b>Order Information</b>						
Order Code		150	275	320	385	440
PROTEC C 160/xxx (4+0)		50.A108	50.A054	50.A109	50.A110	50.A111
PROTEC CR 160/xxx (4+0) (with remote contacts)		50.A112	50.A055	50.A113	50.A114	50.A115
Module PROTEC C(R) 40/xxx		50.A074	50.A075	50.A049	50.A076	50.A077

## ProTec C(R) 160 (4+0)

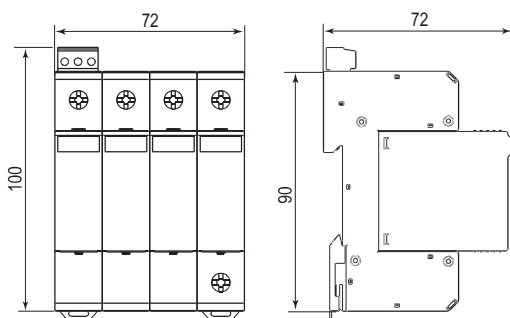
### Internal Configuration

#### Legend

- L Line
- N Neutral
- PE Protective Earth
- RC Remote Contacts Optional



### Dimensions & Packaging [mm]

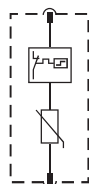


#### Dimensions & Packaging

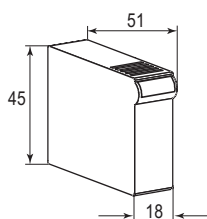
ProTec C 160/xxx (4+0)	150	275	320	385	440
Single Unit Weight	432 g	456 g	456 g	460 g	466 g
Single Unit DIN 43880 Dimension	4 TE				
Packaging Dimensions (H x W x L)	109 x 77 x 80 mm				
Minimum Order Quantity	3 Units				
ProTec CR 160/xxx (4+0)	150	275	320	385	440
Single Unit Weight	437 g	461 g	461 g	465 g	471 g
Single Unit DIN 43880 Dimension	4 TE				
Packaging Dimensions (H x W x L)	109 x 77 x 80 mm				
Minimum Order Quantity	3 Units				

### Module Internal Configuration

#### Module ProTec C(R) 40/xxx



### Dimensions & Packaging [mm]



#### Dimensions & Packaging

Module ProTec C(R) 40/xxx	150	275	320	385	440
Single Unit Weight	48 g	52 g	56 g	58 g	60 g
Single Unit DIN 43880 Dimension	1 TE				
Packaging Dimensions (H x W x L)	98 x 77 x 110 mm				
Minimum Order Quantity	12 Units				

Applicable connection configurations can be found on page 178.