

**Compact Multi-pole SPD**  
**ProBloc B(R) 25 (1+1)**  
**Class I • Class II • Type 1 • Type 2**



Location of Use: Main Distribution Boards  
 Network Systems: TN-S, TT  
 Mode of Protection: L - N, N-PE  
 Surge Ratings:  $I_{imp} = 12.5 \text{ kA} / 50 \text{ kA} (10/350 \mu\text{s})$   
 $I_n = 20 \text{ kA} / 50 \text{ kA} (8/20 \mu\text{s})$   
 IEC/EN Category: Class I, II / Type 1, 2  
 Protective Elements: High Energy MOV and GDT  
 Housing: Compact Design  
 Compliance: IEC 61643-11:2011  
 EN 61643-11:2012

**Technical Data**

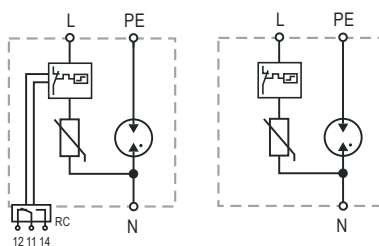
<b>ProBloc B(R) 25/xxx (1+1)</b>		<b>150</b>	<b>275*</b>	<b>320*</b>
<b>Electrical</b>				
Nominal AC Voltage (50/60Hz)	$U_o$	120V	230V	230V
Maximum Continuous Operating Voltage (AC)	(L-N) $U_c$	150V	275V	320V
	(N-PE) $U_c$		255V	
Nominal Discharge Current (8/20 $\mu\text{s}$ )	(L-N)/(N-PE) $I_n$		20 kA / 50 kA	
Maximum Discharge Current (8/20 $\mu\text{s}$ )	(L-N)/(N-PE) $I_{max}$		50 kA / 100 kA	
Impulse Discharge Current (10/350 $\mu\text{s}$ )	(L-N)/(N-PE) $I_{imp}$		12.5 kA / 50 kA	
Total Discharge Current (10/350 $\mu\text{s}$ )	$I_{total}$		25 kA	
Specific Energy	(L-N)/(N-PE) $W/R$		39 kJ/ $\Omega$ / 625 kJ/ $\Omega$	
Charge	(L-N)/(N-PE) $Q$		6.25 As / 25 As	
Voltage Protection Level	(L-N)/(N-PE) $U_p$	< 1.0kV / < 1.5kV	< 1.5kV / < 1.5kV	< 1.5kV / < 1.5kV
Follow Current Interrupt Rating	((N-PE) $I_{fi}$		100 A <sub>RMS</sub>	
Response Time	(L-N)/(N-PE) $t_A$		< 25 ns / < 100 ns	
Back-Up Fuse (if mains > 250 A)			250 A gG	
Short-Circuit Current Rating (AC)	$I_{SCCR}$		50 kA	
TOV Withstand 5s	(L-N) $U_T$	174V	334V	334V
TOV Safe Fail 120min	(L-N) $U_T$	229V	438V	438V
TOV Withstand 200ms	(N-PE) $U_T$		1200V / 300 A	
Number of Ports			1	
<b>Mechanical &amp; Environmental</b>				
Temperature Range	$T_a$	-40 °F to +185 °F [-40 °C to +85 °C]		
Permissible Humidity	RH	5%...95%		
Terminal Screw Torque	$M_{max}$	26.5 lbf-in [3.0 Nm]		
Conductor Cross Section (max)		2 AWG (Solid, Stranded) / 4 AWG (Flexible)		
		35mm <sup>2</sup> (Solid, Stranded) / 25mm <sup>2</sup> (Flexible)		
Mounting		35 mm DIN Rail, EN 60715		
Degree of Protection		IP 20 (built-in)		
Housing Material		Thermoplastic: Extinguishing Degree UL 94 V-0		
Thermal Protection	(L-N)/(N-PE)	Yes/No		
Fault Indication	(L-N)/(N-PE)	Red Flag/No		
Remote Contacts (RC)		Optional		
RC Switching Capacity		AC: 250V/0.5A; 125V/3A		
RC Terminal Cross Section (max)		1.5mm <sup>2</sup> (Solid) / 16 AWG (Solid)		
RC Terminal Screw Torque	$M_{max}$	2.2 lbf-in [0.25 Nm]		
<b>Order Information</b>				
Order Code		<b>150</b>	<b>275</b>	<b>320</b>
ProBloc B 25/xxx (1+1)		56.0542	56.0544	56.0546
ProBloc BR 25/xxx (1+1) (with remote contacts)		56.0543	56.0545	56.0547

\*OVE Certified

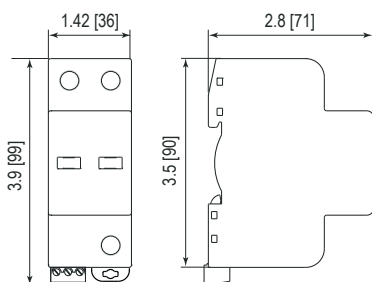
Internal Configuration

Legend

- L Line
- N Neutral
- PE Protective Earth
- RC Remote Contacts Optional



Dimensions & Packaging



Dimensions & Packaging			
<b>ProBloc B 25/xxx (1+1)</b>			
Single Unit Weight	pounds	<b>150</b>	<b>275</b>
	grams	<b>110</b>	<b>150</b>
Single Unit DIN 43880 Dimension		2 TE	
Packaging Dimensions (H x W x L)		4.2 x 3 x 1.6" [109 x 77 x 42 mm]	
Minimum Order Quantity		7 Units	
<b>ProBloc BR 25/xxx (1+1)</b>			
Single Unit Weight	pounds	<b>150</b>	<b>275</b>
	grams	<b>115</b>	<b>155</b>
Single Unit DIN 43880 Dimension		2 TE	
Packaging Dimensions (H x W x L)		4.2 x 3 x 1.6" [109 x 77 x 42 mm]	
Minimum Order Quantity		7 Units	

inches  
[mm]

Information contained in this document is subject to change at any time without notice.

